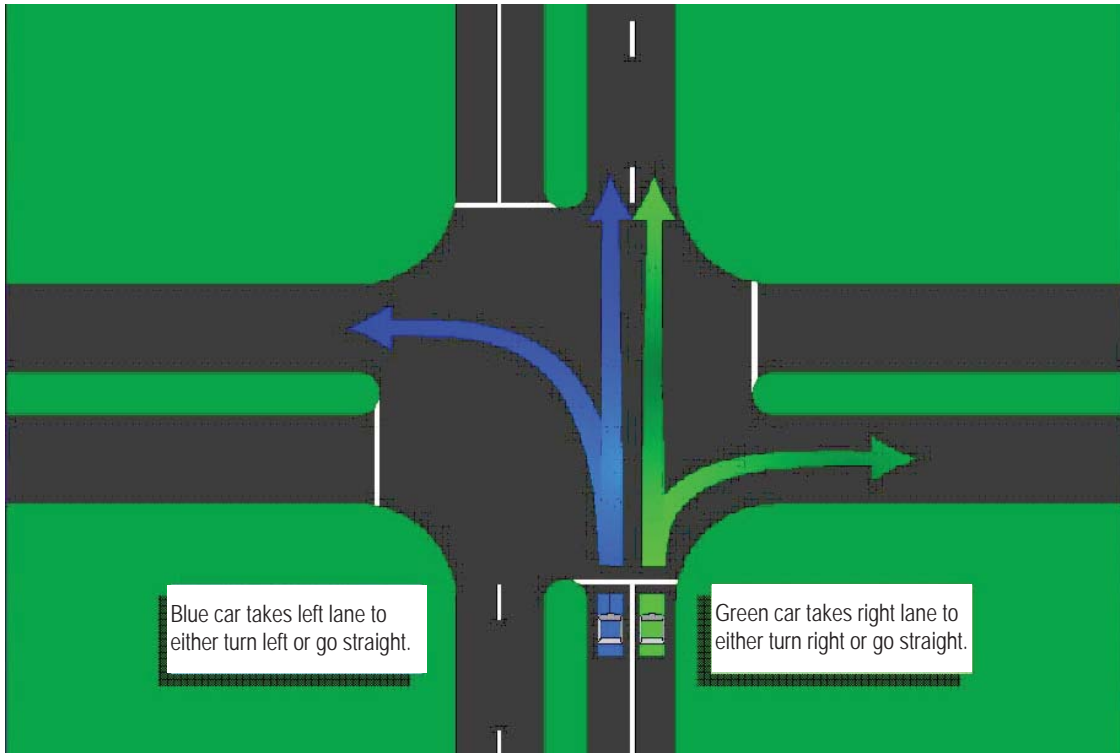


Roundabout Driving

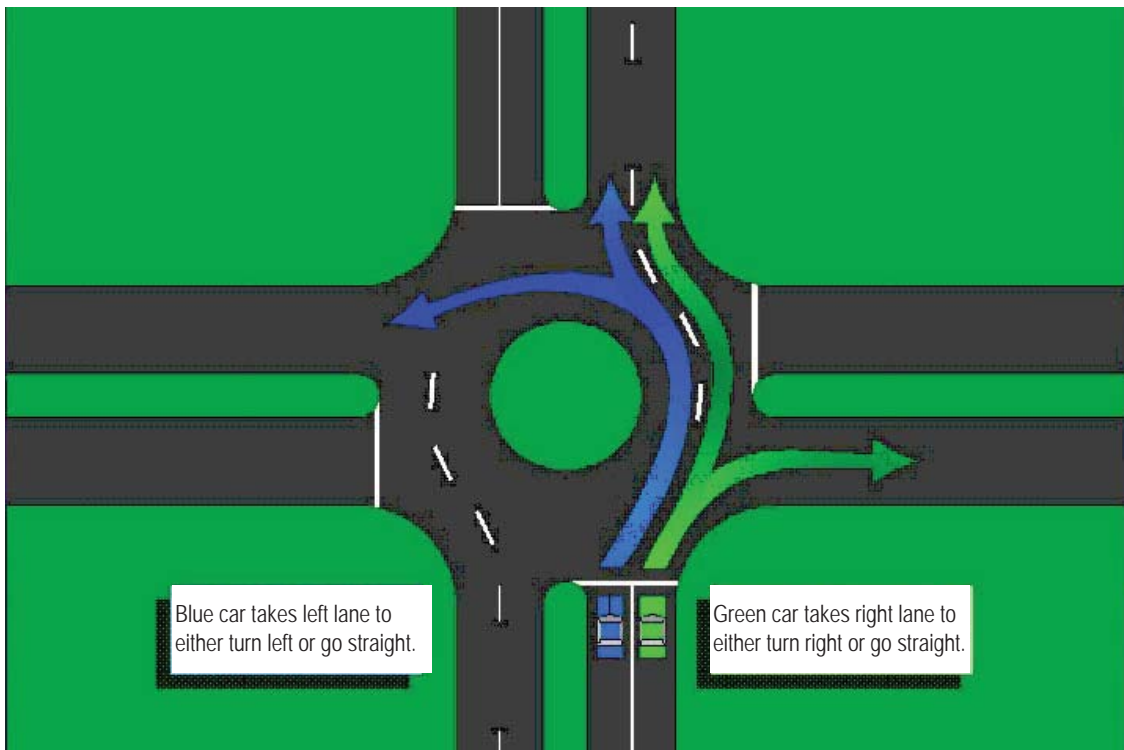
The Rt. Hon. Herb Gray Parkway features a modern multi-lane roundabout that connects County Road 9 (Howard Avenue Diversion), Highway 3 and Highway 401 on/off ramps. The Parkway roundabout is a unique feature that opened to traffic in November 2012, and was one of the first permanent features completed for the Parkway.

Driving in a roundabout is not that different from driving through a typical intersection.

Typical Intersection




Multi-lane Roundabout



For more information:

 www.hgparkway.ca

 1-877-937-5929

 www.facebook.com/hgparkway


 www.twitter.com/hgparkway


 www.flickr.com/hgparkway

 www.youtube.com/hgparkway

 www.pinterest.com/hgparkway

 www.linkedin.com

 Public Liaison Office
2187 Huron Church Road
Suite 340 A
Windsor, ON N9C 2L8
hgp-plo@wemg.ca

 Ministry of Transportation
949 McDougall Avenue
Suite 200
Windsor, ON N9A 1L9
detroit.river@ontario.ca