

About the Parkway Roundabout

The Rt. Hon. Herb Gray Parkway features a modern multi-lane roundabout where County Road 9 (Howard Avenue Diversion) meets Highway 3 and Highway 401 on/off ramps. The roundabout is a unique feature that will benefit travellers and the environment alike.

Pedestrians and Cyclists

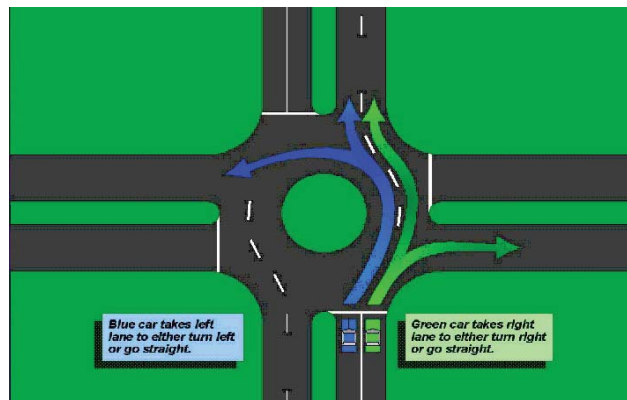
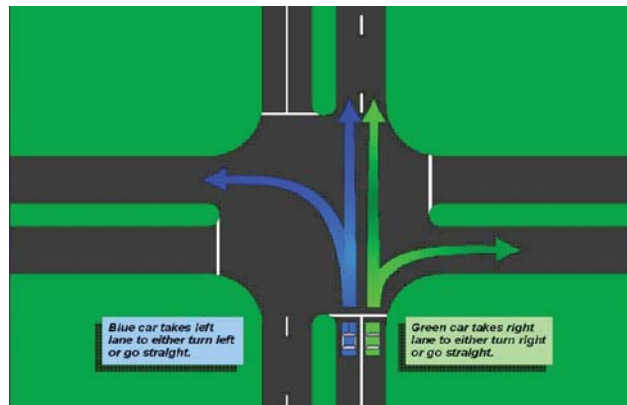


The Parkway roundabout does not include pedestrian access, crosswalks or dedicated cycling lanes. The 20 kilometres of trails included in the Parkway provide recreational and active transportation opportunities for pedestrians and cyclists.



Driving Tips

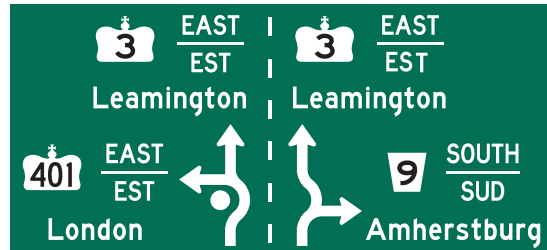
Driving in a roundabout is not that different from driving through a typical intersection.



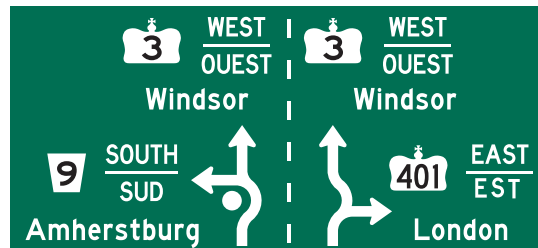
Signs

These signs will help you navigate your way through the Parkway roundabout.

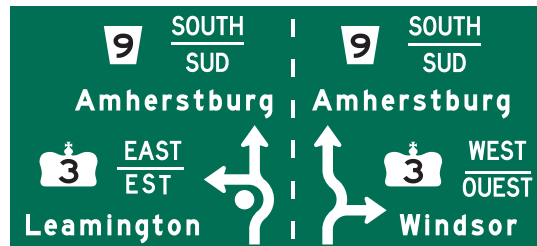
Entering from Highway 3 Eastbound



Entering from Highway 3 Westbound



Entering from Highway 401 Westbound



Entering from County Road 9 (Howard Avenue Diversion) Northbound



For more information, visit www.hgparkway.ca,
www.ontario.ca/roundabout, or call the
Parkway project team at 1-877-937-5929.