

## Temporary Closure of Cousineau Road at Highway 3

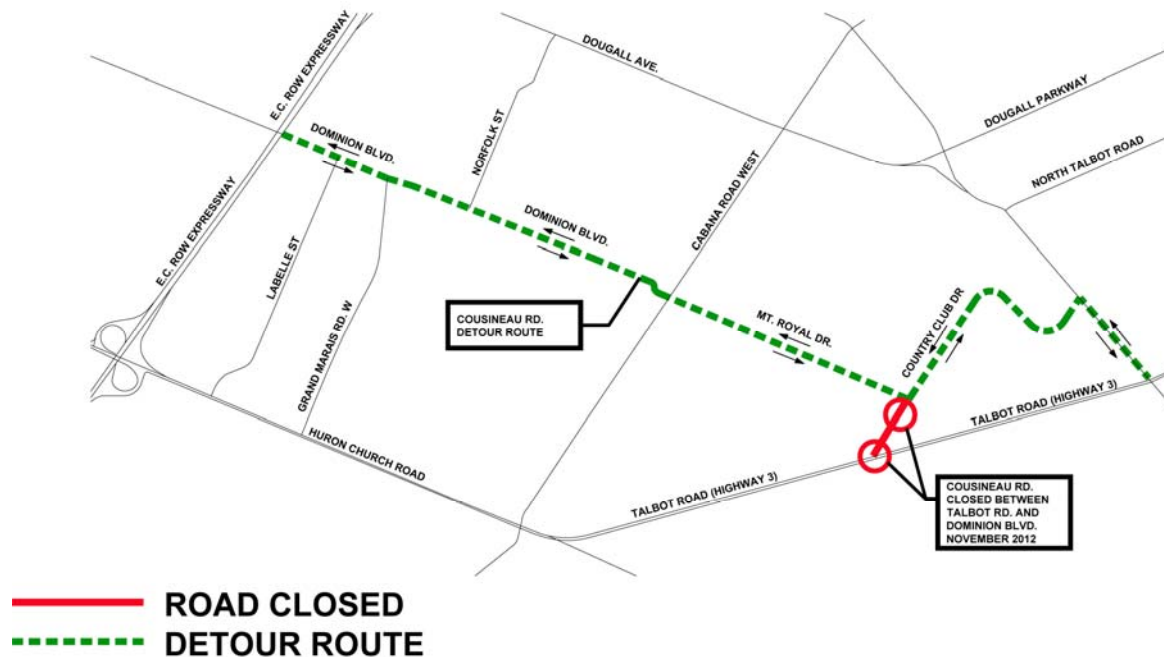
Starting in November 2012, Cousineau Road will be closed at its intersection with Highway 3 for a period of 11 months.

This closure is necessary to allow for the construction of the Cousineau Tunnel (T-9). The footprint of T-9 lies on the current intersection of Highway 3 and Cousineau Road. The construction of this tunnel requires a large excavation at this location, making this closure necessary.

During the closure, the intersection of Highway 3 and Sandwich West Parkway will remain open.

### Detour Routes

- For traffic coming from Cousineau Road to Highway 3 westbound, the detour route will be:
  - Cousineau Road to Mount Royal Drive, to Dominion Boulevard, to E.C. Row Expressway westbound, to Huron Church Road.
- For traffic coming from Highway 3 to Cousineau Road, the detour route will be:
  - Highway 3 to Howard Avenue northbound, to Country Club Drive, to Cousineau Road.



If you have any concerns regarding this closure, please contact or visit the Windsor Essex Mobility Group's Public Liaison Office at 1-877-937-5929, 2187 Huron Church Road Suite 340, or [wep-plo@wemg.ca](mailto:wep-plo@wemg.ca).