

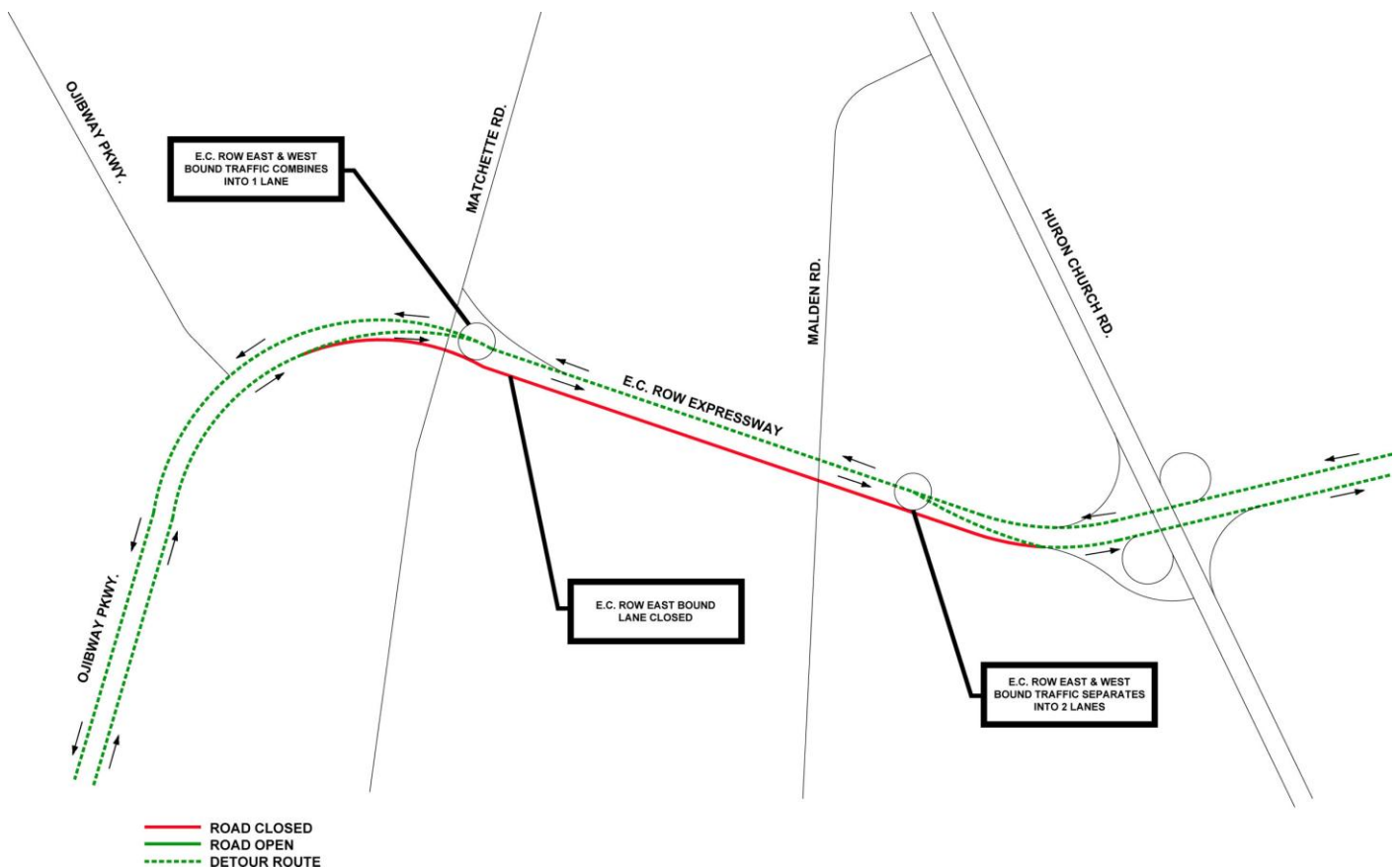
## Temporary Single Laning of E.C. Row Expressway

The existing eastbound lanes of the E.C. Row Expressway (E.C. Row Expressway intersection with Ojibway Parkway to Huron Church Road overpass) will be closed for two years starting in the fall of 2012. A single lane of traffic in each direction will be maintained on the existing westbound lanes of E.C. Row Expressway separated by temporary concrete barrier and associated pavement markings. There will be a reduction in the speed limit from 100 km/h to 80km/h.

The existing eastbound lanes of E.C. Row Expressway will be closed to allow for the construction of the future E.C. Row Expressway eastbound lanes. During this time, a high embankment will be built in the Bridge 3 (Matchette Road) area and soil will be surcharged over the existing E.C. Row Expressway eastbound lanes.

### Traffic Configuration

Traffic configuration during this traffic staging is subject to ongoing municipal consultation and may be slightly modified. In addition to newspaper and radio notification of the closure, signage will be placed two weeks in advance of the closure.



If you have any concerns regarding construction of the Parkway, please contact or visit the Windsor Essex Mobility Group's Public Liaison Office at 1-877-937-5929, 2187 Huron Church Road Suite 340, or [wep-plo@wemq.ca](mailto:wep-plo@wemq.ca).