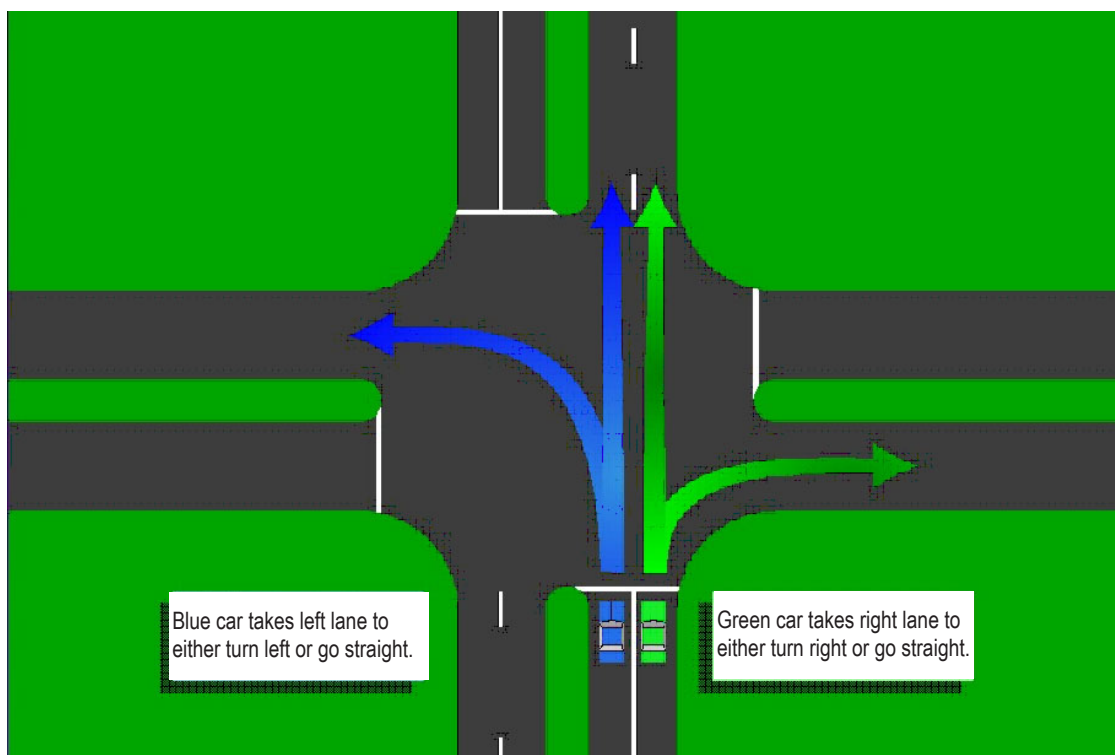


Roundabout Driving

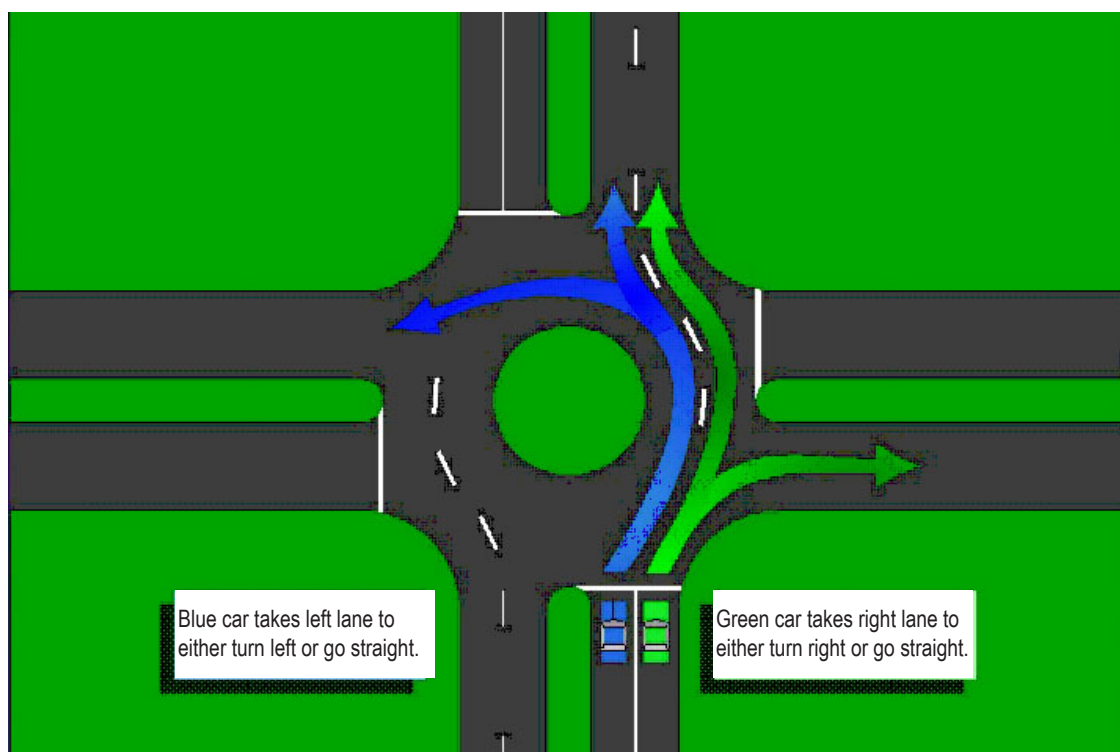
The Windsor-Essex Parkway features a new multi-lane roundabout that connects the Howard Avenue Diversion (County Road 9), Highway 3 and Highway 401 on/off ramps. The Howard Avenue Diversion is located at the east end of the Parkway corridor, and is one of the first permanent features completed for the Windsor-Essex Parkway.

The lane use for a typical multi-lane roundabout is really no different than for a typical intersection.

Typical Intersection



Multi-lane Roundabout



For more information:

- www.weparkway.ca
- 1-877-WE-PKWAY
- www.facebook.com/weparkway
- www.twitter.com/weparkway
- www.flickr.com/photos/weparkway
- www.youtube.com/weparkway

- Public Liaison Office
2187 Huron Church Road
Suite 340 A
Windsor, ON N9C 2L8
wep-plo@wemg.ca

- Ministry of Transportation
949 McDougall Avenue
Suite 200
Windsor, ON N9A 1L9
detroit.river@ontario.ca