

Temporary Long-Term Single Laning of E.C. Row Expressway

Traffic on the E.C. Row Expressway will be reconfigured for approximately two years starting on Monday, October 29, 2012. The E.C. Row Expressway will not be closed but will keep a single lane of traffic in each direction on the existing westbound lanes. To maintain safety, the existing westbound lanes will be separated by temporary barriers and speed limit will be reduced from 100 km/h to 80 km/h. This configuration will not exceed two years in duration. Through consultation with emergency services providers a plan has been developed should incidents occur in the area of the single laning. An alternate route has been identified for use in circumstances where traffic cannot be managed within this portion of EC Row Expressway, such as a collision.

Purpose

The purpose of the reconfiguration is to allow for the construction of the future E.C. Row Expressway eastbound lanes. During this time, a high embankment will be built in the Bridge 3 (Matchette Road) area and soil will be surcharged over the existing E.C. Row Expressway eastbound lanes.

The approach to construction is allowing work to stay within the confines of the Parkway corridor. Other approaches considered included building a new two-lane diversion, a temporary disruption of a sensitive ecological area and required a longer construction schedule.

Safety and Traffic Flow

The safe movement of traffic during this single laning is important. As such, a number of impact mitigation measures will help maintain a high level of safety for drivers and Parkway workers alike.

- Each lane will be 3.5 metres in width with fully paved right shoulders up to 2.5 metres in width.
- Following extensive consultation with emergency and police services was agreed that the speed limit in the area of single laning would be reduced from 100 km/h to 80 km/h.
- Drivers approaching the single laning will be well advised of the changes in the road alignment through the use of flashing arrow board signs and warning signs.
- Pavement markings will be well maintained.

Travellers through the portion of E.C. Row Expressway between Ojibway Parkway and Huron Church Road may experience some minimal traffic slow downs. Alternative routes or detours have not been identified as part of this traffic plan. Rather, the safety measures listed above will also contribute to traffic management. These plans have been developed with the Ministry of Transportation and the City of Windsor. In addition, local industrial users of this corridor have been consulted about peak travel times and optimum alternative times for transporting of goods have been discussed. This will help alleviate anticipated congestion.

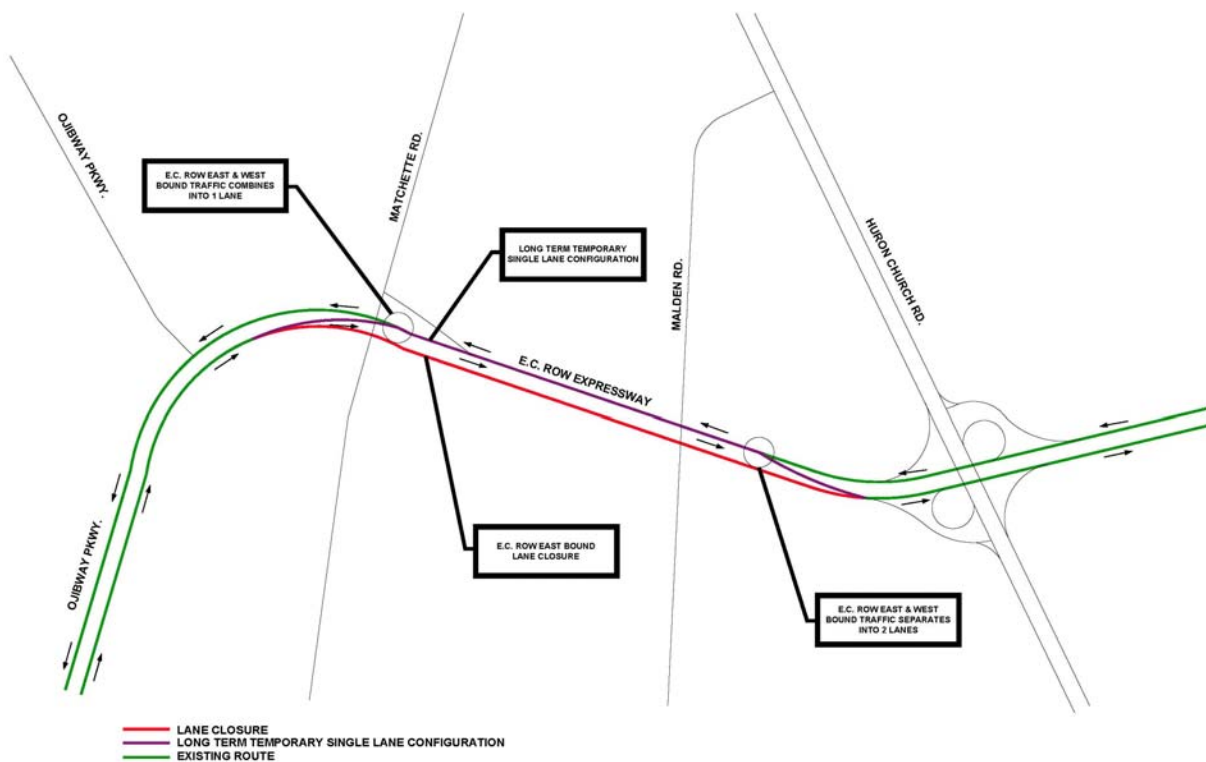
These measures and others will be monitored and assessed throughout the two-year closure and will be changed or adapted based on the project team's observations or feedback from stakeholders and drivers.

Incident Management

Through consultation with emergency services providers a plan has been developed should incidents occur in the area of the single laning. An alternate route has been identified for use in circumstances where traffic cannot be managed within this portion of EC Row Expressway, such as a collision. This route generally follows Tecumseh Road, Prince Road, Huron Church Road and Sandwich Street/Ojibway Parkway. The impact to residents along these municipal streets will be limited as E.C. Row Expressway traffic will only be detoured to these roads on extreme circumstances. The Parkway project team will work closely with local emergency responders during any incident to ensure they are able to access the site, to direct traffic, to clear any traffic obstructions and to reinstate the movement of traffic through this corridor.

Traffic Configuration

The map below details the traffic configuration for the single laning.



If you have any concerns regarding construction of the Parkway, please contact or visit the Windsor Essex Mobility Group's Public Liaison Office at 1-877-937-5929, 2187 Huron Church Road Suite 340, or wep-plo@wemg.ca.

Please visit www.weparkway.ca to learn more about the Windsor-Essex Parkway. Updates will be posted on Twitter (www.twitter.com/weparkway) and Facebook (www.facebook.com/weparkway) and photos and videos will be posted on Flickr (www.flickr.com/weparkway) and YouTube (www.youtube.com/weparkway).