



Parkway Infrastructure Constructors
340-2187 Huron Church Rd, Windsor, ON N9C 2L8, Canada
+1 (519) 946-4301 Office • +1 (519) 790-7850 Fax

May 18, 2012

**RE: UPCOMING CONSTRUCTION ACTIVITY- PILE DRIVING
BRIDGE B-11, WEST OF HOWARD AVENUE**

Dear Resident,

As part of our commitment to keep residents and business owners informed about ongoing Windsor-Essex Parkway construction activities, we are writing to inform you of the upcoming construction works in your area.

Pile driving activities are required for the start of construction of Bridge B-11, located west of Howard Avenue. Construction of bridges and tunnels requires steel piles be driven in the ground for support.

Equipment is currently being mobilized in this area and pile driving is anticipated to begin early in the week of May 21, 2012. The total anticipated duration for pile driving at this location is estimated to be approximately ten to twelve weeks. Piles will only be driven on weekdays and will be limited to daytime hours.

Every effort will be made to reduce impact to residents in adjacent areas. Pile driving is noisy and, in some instances, causes noise and vibration beyond the project limits. Pre-construction condition surveys have been conducted in those areas that are believed to be within an area of impact. Noise and vibration will be monitored throughout the pile driving activities to ensure work is being carried out according to allowable standards.

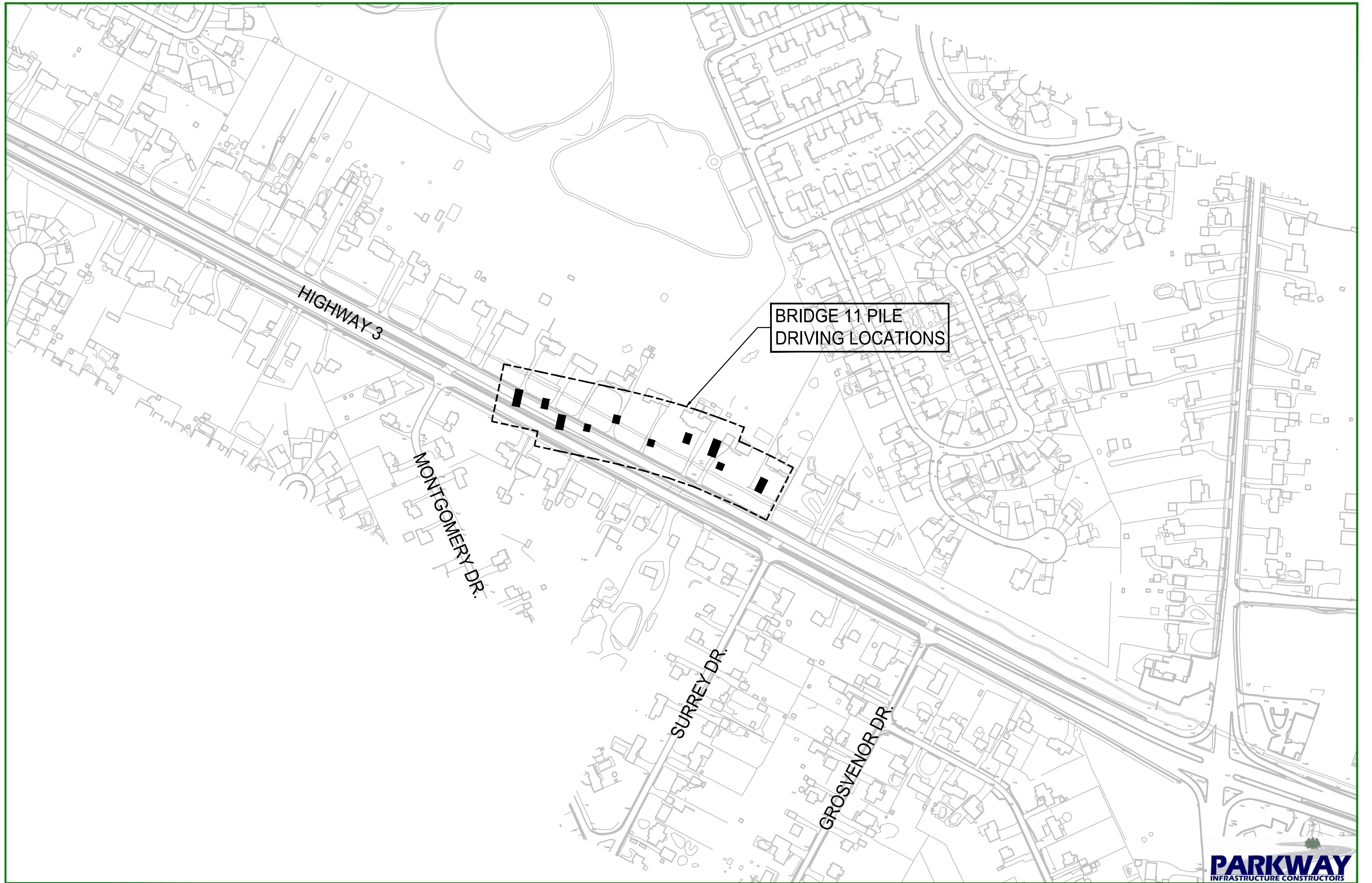
Please be advised that the scheduling of all construction activities, including pile driving, may be affected by adverse weather conditions, labour disruptions or any other unforeseen conditions.

A *Complaints Management Protocol* has been developed to address any concerns the public may have as a result of our construction activities. The Protocol is available on www.weparkway.ca. Should you have any questions or concerns please contact the Windsor Essex Mobility Group Public Liaison Office at 1-877-WE-PKWAY (1-877-937-5929) or via e-mail at wep-plo@wemg.ca. We are committed to acknowledging any inquiry received within 24 hours on business days. We will treat any inquiries related to pile driving as a priority and work to answer questions and resolve concerns as quickly as possible.

We appreciate your cooperation during this time.

Yours truly,

Parkway Infrastructure Constructors



BRIDGE 11 PILE
DRIVING LOCATIONS

HIGHWAY 3

MONTGOMERY DR.

SURREY DR.

GROSVENOR DR.