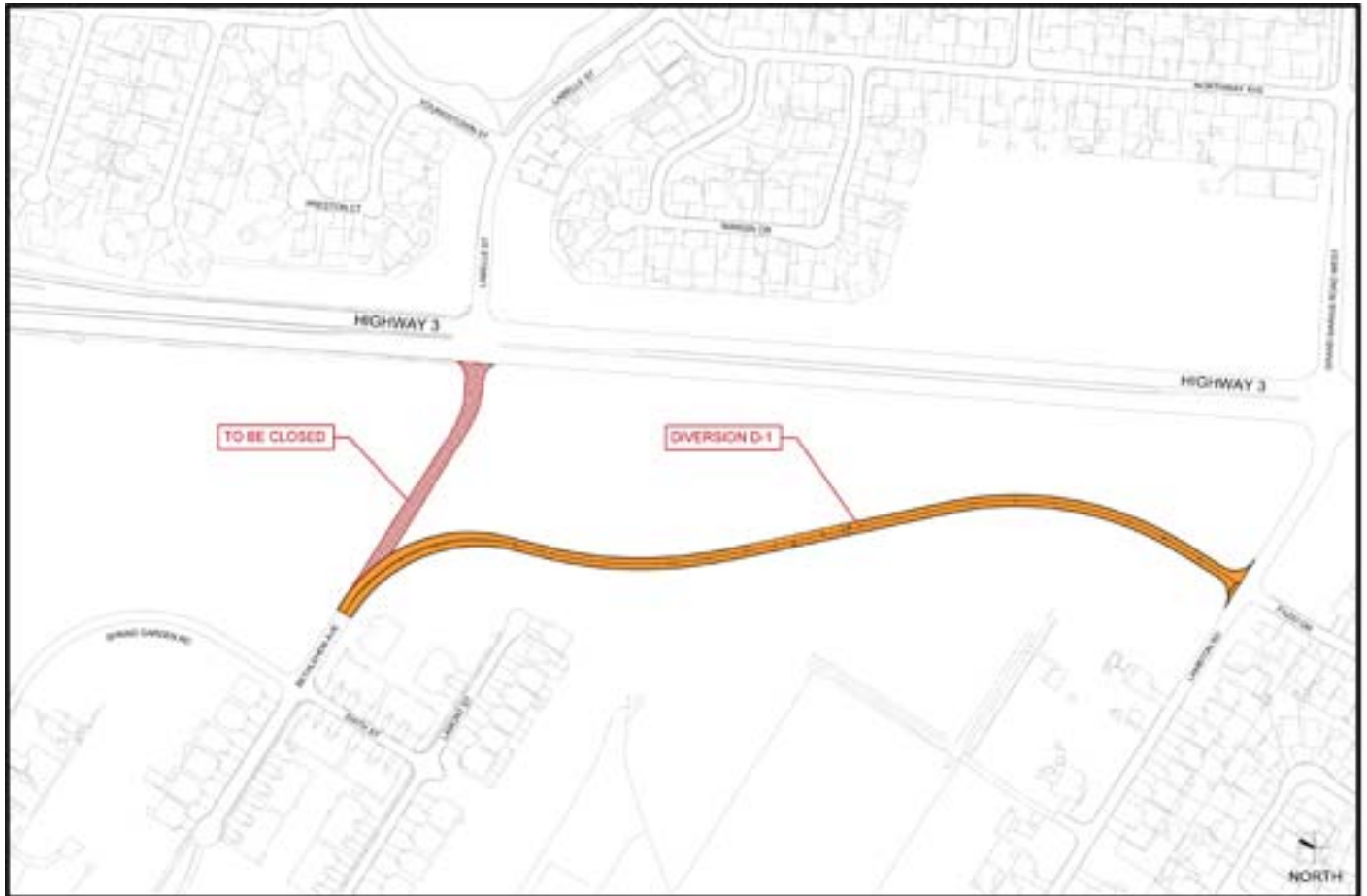


Diversion 1 – Official Opening

Diversion 1 is located between Bethlehem Avenue and Lambton Road and it connects Spring Garden Road to Lambton Road. It is anticipated that the diversion will be in use for one year. The section of Bethlehem Avenue from east of Diversion 1 and the signaled intersection will be closed. The work taking place in this area requires the closure of the sidewalk on the west side of southbound Huron Church Road from roughly the area of the Super 8 Motel (north of E.C. Row Expressway) to Lambton Road and the closure of a portion of the right lane on southbound Huron Church Road between the E.C. Row Expressway on-ramp and Labelle Street.



In this aerial image taken February 15, 2012, Diversion 1 can be seen running through the centre of the photograph with Huron Church Road to the east. Pond 5 is being constructed just to the west of Diversion 1.



Please visit www.weparkway.ca to learn more about the Windsor-Essex Parkway. Updates will be posted on Twitter (www.twitter.com/WEParkway) and photos and videos will be posted on Flickr (www.flickr.com/photos/weparkway) and YouTube (www.youtube.com/weparkway).