

Municipal Council: Windsor-Essex Parkway Briefing

City of Windsor

November 21, 2011



- Introduction
 - Design and Status
 - Planned Construction (upcoming 6 months)
 - Pile Driving
 - Minimizing Construction Impacts
 - Maintenance
 - Complaints Management Protocol
-



The Windsor-Essex Parkway is being delivered by the Ontario Ministry of Transportation (MTO) and Infrastructure Ontario (IO) through an alternative financing and procurement partnership with the Windsor Essex Mobility Group (WEMG) and its construction contractor the Parkway Infrastructure Constructors (PIC)



Windsor-Essex Mobility Group (WEMG) = The Design-Build-Operate Team



Parkway Infrastructure Constructors (PIC) = The Designers and Constructors



Design and Construction Report #2 - public review and comment period opened Tuesday, October 11 and closed Thursday, November 10, 2011 at 3:00 p.m.

General sequence of construction activities documented in Design and Construction Report #2:

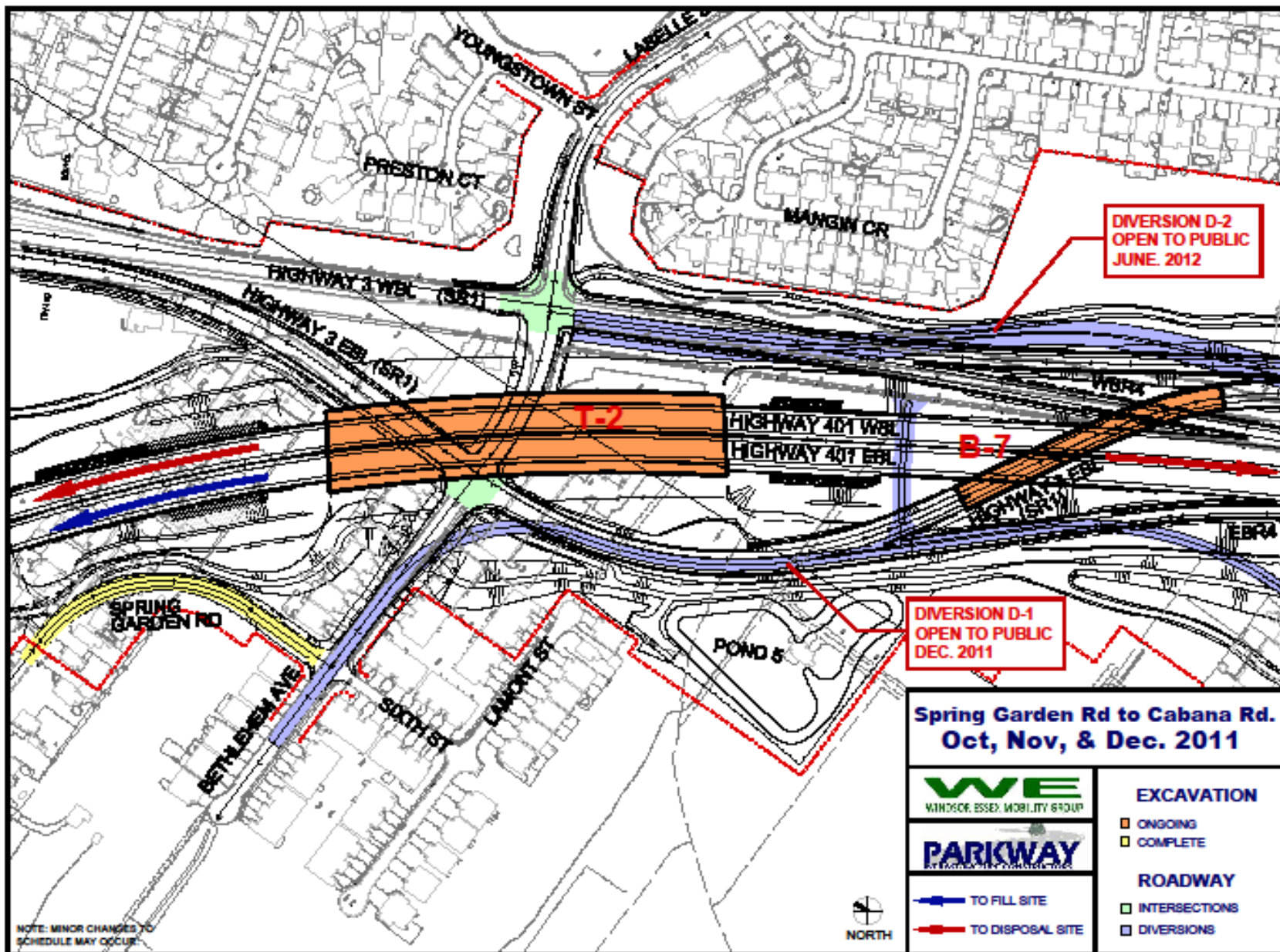
1. vegetation removal, top soil stripping, and grading throughout the project area
2. digging of stormwater management ponds to preliminary configuration and to be used to treat water from excavation work
3. construction of traffic diversions including granular placement and paving
4. excavation for new Highway 401 and Highway 3 with the priority areas being where bridges and tunnels are to be constructed
5. pile driving and construction of bridges and tunnels
6. construction of roadside elements such as illumination, traffic signals, Advanced Traffic Management Systems, drainage, and roadside safety elements
7. placement of granulars and paving

Major Construction Works: Windsor Upcoming Six Months

- Relocation and removal of utilities on both sides of Huron Church Road from Spring Garden to Cabana
- Construction of sanitary sewer between Spring Garden Rd and Second Street
- Excavation of Pond 5
- Construction of new Spring Garden Road and Detour 1, from Bethlehem to Lambton
- Construction of detours 2, 3 and new Highway 3, between Pulford and Grand Marais
- Building of connection between D1 and D2
- Start of construction for T2, at LaBelle and Bethlehem
- Start of construction for B7, at LaBelle and Lambton

Major Construction Works (Cont'd): Windsor Upcoming Six Months

- Continuation of clearing and grubbing in the embankment area from Ojibway to Huron Church
- Continuation of granular placement for wick drains (Malden and Matchette area, Ojibway)
- Continuation of wick drain installation (Malden and Matchette area, Ojibway)
- Construction start for embankments at Matchette and Malden area
- Closure of the ramp at Matchette Road to E.C. Row
- Construction of temporary McKee Drain culvert and temporary diversion for Basin Drain



**DIVERSION D-2
OPEN TO PUBLIC
JUNE, 2012**

**DIVERSION D-1
OPEN TO PUBLIC
DEC. 2011**

**Spring Garden Rd to Cabana Rd.
Oct, Nov, & Dec. 2011**

WE
WINDSOR, ESSEX, MOBILITY GROUP

PARKWAY
CONSTRUCTION GROUP

EXCAVATION

- ONGOING
- COMPLETE

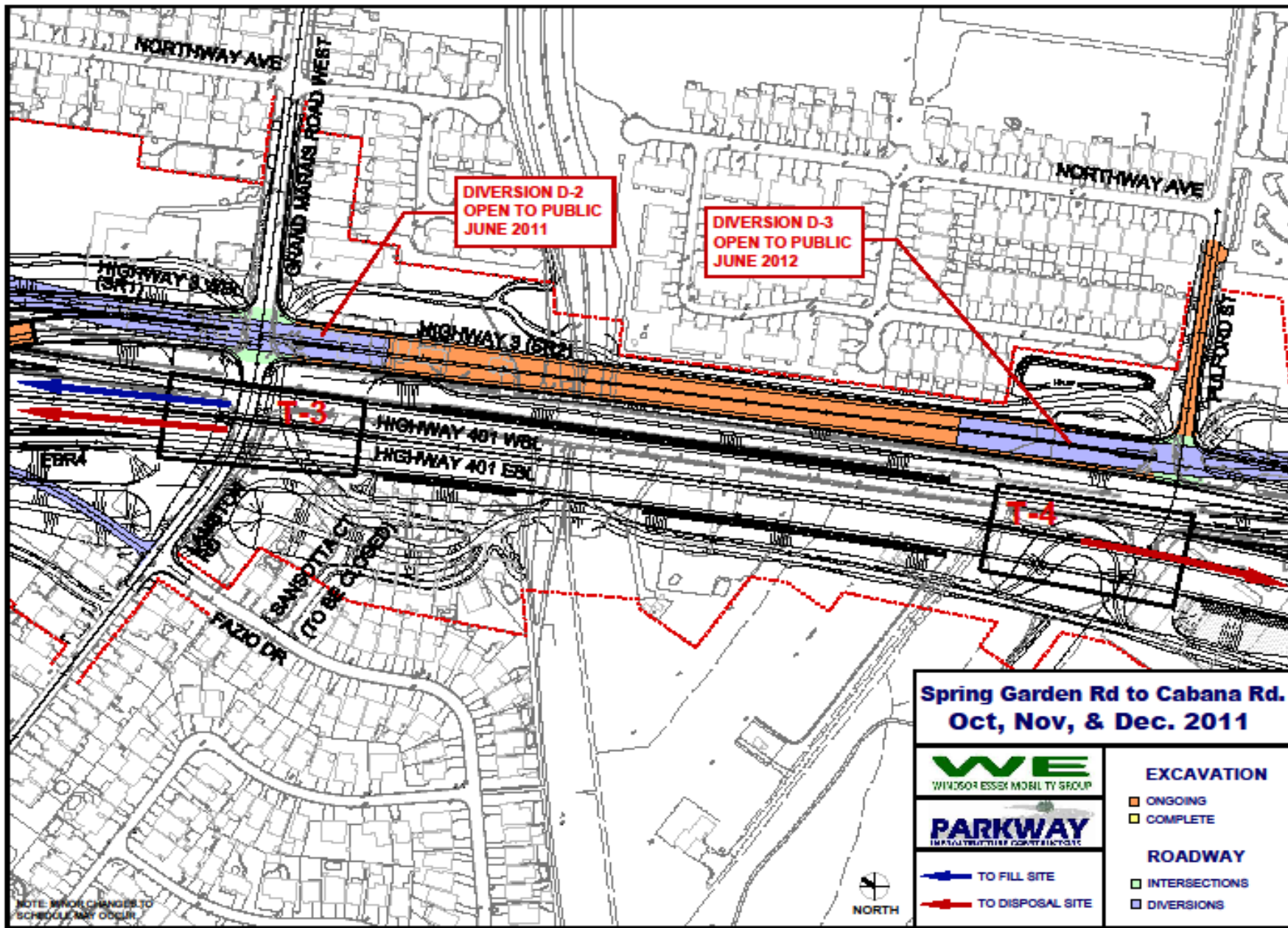
ROADWAY

- INTERSECTIONS
- DIVERSIONS

- ➡ TO FILL SITE
- ➡ TO DISPOSAL SITE



NOTE: MINOR CHANGES TO SCHEDULE MAY OCCUR



DIVERSION D-2
OPEN TO PUBLIC
JUNE 2011

DIVERSION D-3
OPEN TO PUBLIC
JUNE 2012

T-3

T-4

NORTHWAY AVE

GRAND MARAIS ROAD WEST

NORTHWAY AVE

FULLFORD ST

HIGHWAY 3 (BR2)

HIGHWAY 3 (BR2)

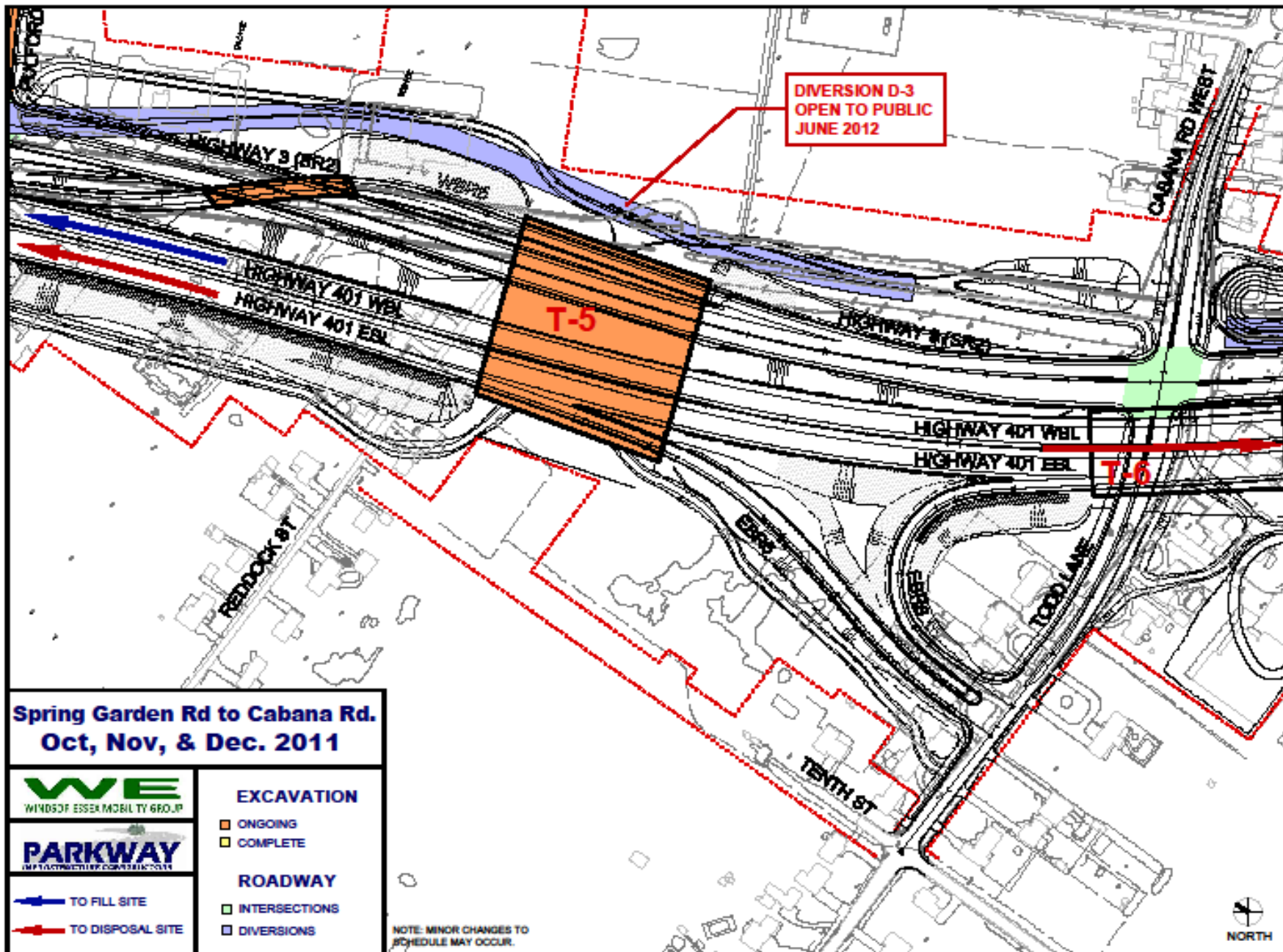
HIGHWAY 401 WEST

HIGHWAY 401 EAST

EBR4

FAZIO DR

TO BE CLOSED



**Spring Garden Rd to Cabana Rd.
Oct, Nov, & Dec. 2011**



- TO FILL SITE
- TO DISPOSAL SITE

EXCAVATION

- ONGOING
- COMPLETE

ROADWAY

- INTERSECTIONS
- DIVERSIONS

NOTE: MINOR CHANGES TO SCHEDULE MAY OCCUR.



Pile Driving

- We understand the concern residents in the construction area have regarding noise and vibration.
- Pile driving is noisy and in some circumstances could cause noise or vibration beyond the project limits.
- A pre-construction condition survey will be conducted in those areas that are believed to be within a potential area of impact.
- Noise and vibration will be monitored throughout the pile driving activities.
- Pile driving will be limited to daytime hours.
- All adjacent residents and business owners will be advised in advance of pile driving activities.

Pile Driving Schedule: Windsor

Structure	Location	<i>Approximate Start</i>	<i>Estimated Duration</i>
Bridge 7	LaBelle St and Lambton Rd	July 2012	1 month
Tunnel 2	LaBelle St and Bethlehem Ave	April 2012	1 ½ months

Construction Impacts

Some of the identified impacts associated with this road construction include:

- Noise
- Dust
- Traffic Diversion
- Workers in Residential Neighbourhoods



Impact Mitigation Measures

- Established confined work hours (between 7 and 7 in most cases)
 - Operate within noise by-law, unless specific exemptions granted
 - Operate in accordance with approved dust control plan
 - Two lanes of traffic, in both directions, open at all times on Huron Church Road (except upon approval between midnight and 5:00 a.m.)
 - Construct and open diversions prior to closing existing streets
 - Use weekly “tool box talks” to educate workers about being guests in your neighbourhoods
-

Maintenance

- AMICO will provide winter maintenance in accordance with MTO maintenance standards.
 - Snow removal will occur on a regular schedule.
 - Crews are in the corridor daily and will maintain regular scheduled upkeep of the construction zones and the roadway during the winter months.
 - For any concerns about maintenance during the winter, residents should contact the Public Liaison Office at 1-877-937-5929.
-

Comments, Questions and Complaints

- The Complaints Management Protocol is available on the project website at www.weparkway.ca.
 - The document explains how community members can go about communicating any concerns they have during construction directly to the construction team.
 - The construction team will work with the community to address concerns as they happen.
-



**2187 Huron Church Rd
Suite 340A**

Phone: 1-877-WE-PKWAY (1-877-937-5929) or 226-347-1519

Email: wep-plo@wemg.ca

Web: www.weparkway.ca



Thank you.