

THE WINDSOR-ESSEX **Parkway**



WE
WINDSOR ESSEX MOBILITY GROUP

Neighbourhood Meeting for September 21st, 2011





Parkway Infrastructure Constructors (PIC)

- Introductions
 - Outline of Meeting Format
 - Request for Feedback
-

Construction Impacts

A variety of tactics are being used to minimize the impacts of this project on residents and on the travelling public.

With your help, we will be more effective in our efforts to be less intrusive.



Construction Impacts

Some of the identified impacts associated with this road construction include:

- Noise
- Dust
- Traffic Diversion
- Workers in Your Neighbourhood



Impact Mitigation Measures

- **Established Confined Work Hours (Between 7 and 7 in most cases)**
 - **Operate within Noise By-law Unless Specific Exemptions Granted**
 - **Operate in accordance with approved Dust Control Plan**
 - **Two Lanes of Traffic, in both directions, Open at All Times on Huron Church Road (except upon approval between Midnight and 4:00 a.m.)**
 - **Construct and Open Diversions Prior to Closing Existing Streets**
 - **Use Weekly “Tool Box Talks” to Educate Workers about being Guests in your Neighbourhoods**
 - **Other Ideas from the Residents**
-



To ensure that area residents are aware of what to expect and when, we are going to outline, in detail, the works to be undertaken during October, November and December 2011:

- **IN your Neighbourhood**

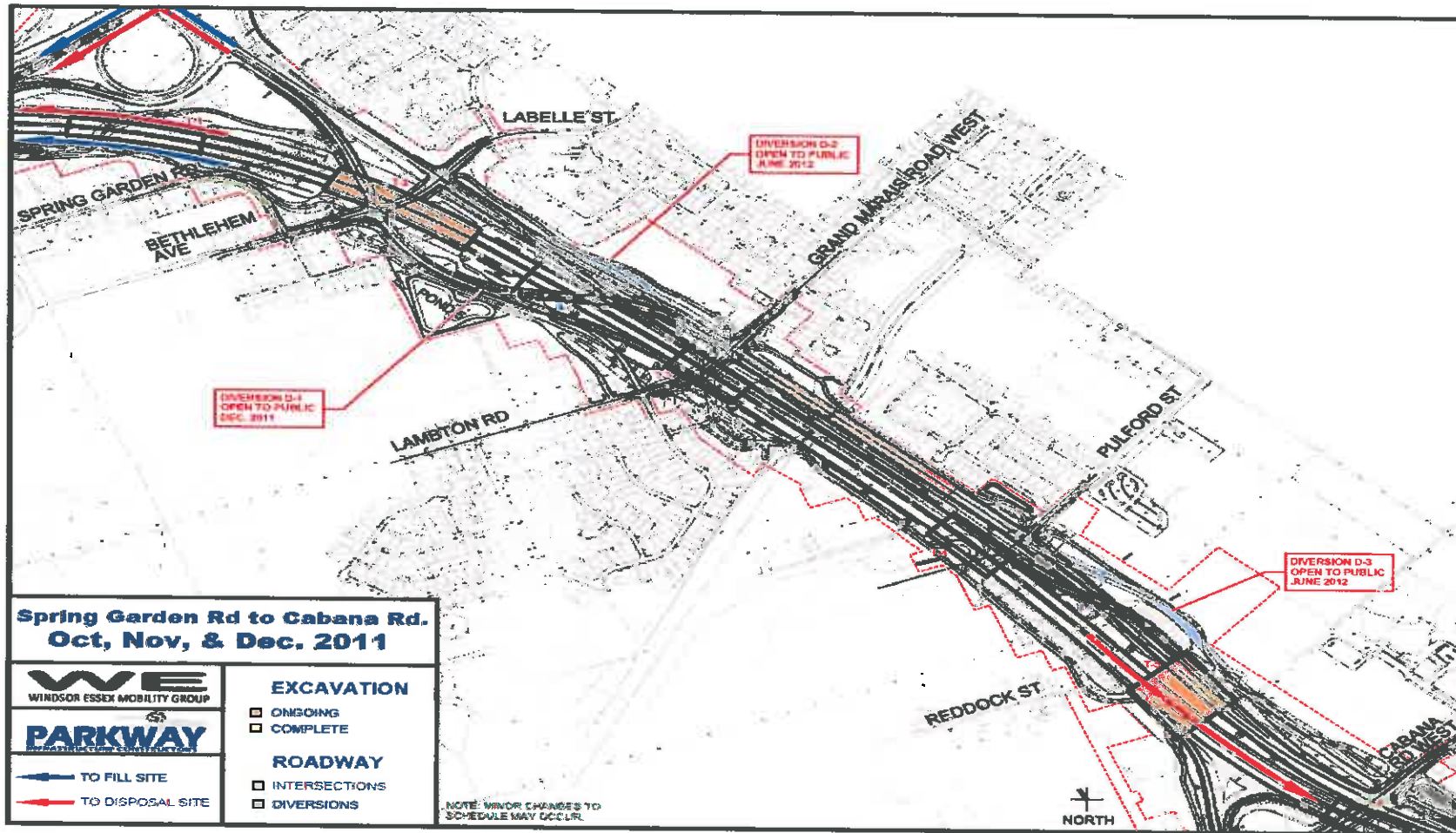
We will also provide a brief summary of construction activities for the same timeframe east of your neighbourhood.



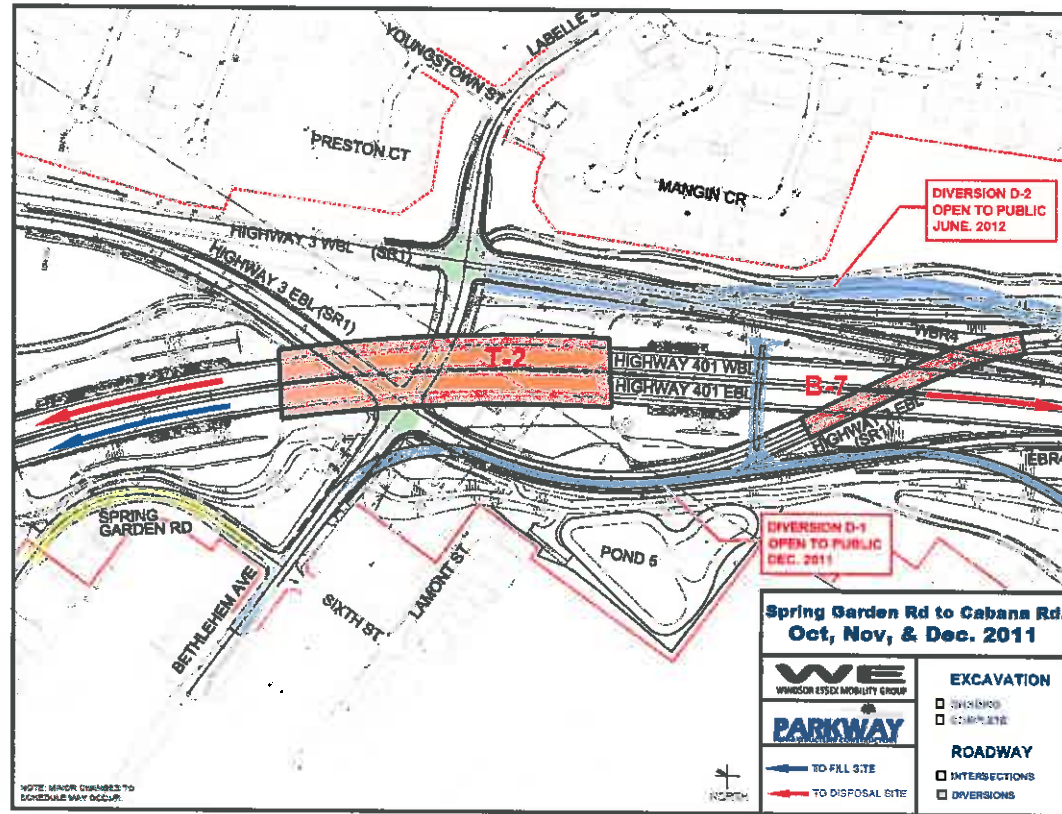
We will outline in greater detail:

- Staging and timing of construction activities
 - Vegetation removal
 - Earth excavation and movement and stock piling
 - Traffic Management including diversions, detours and local access
 - Noise mitigation
 - Aesthetics of bridges, tunnels and walls
-

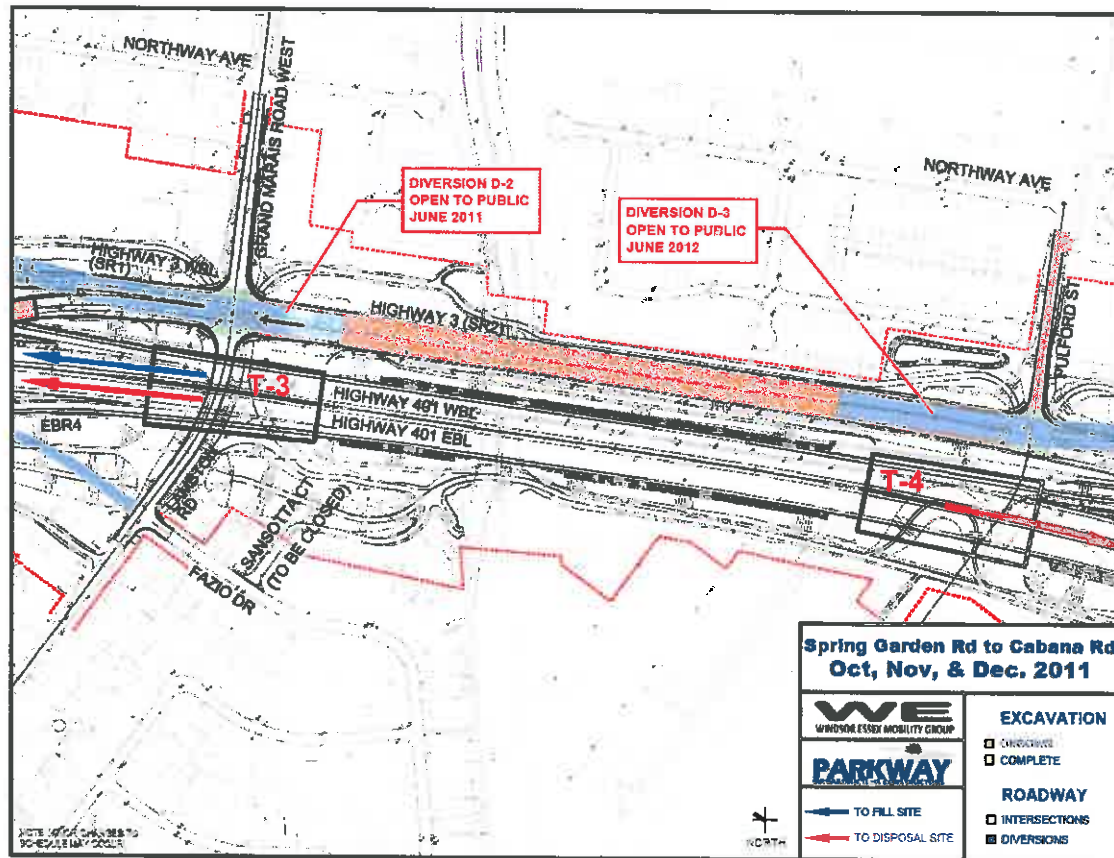
Specifics of Construction Activity IN Your Neighbourhood



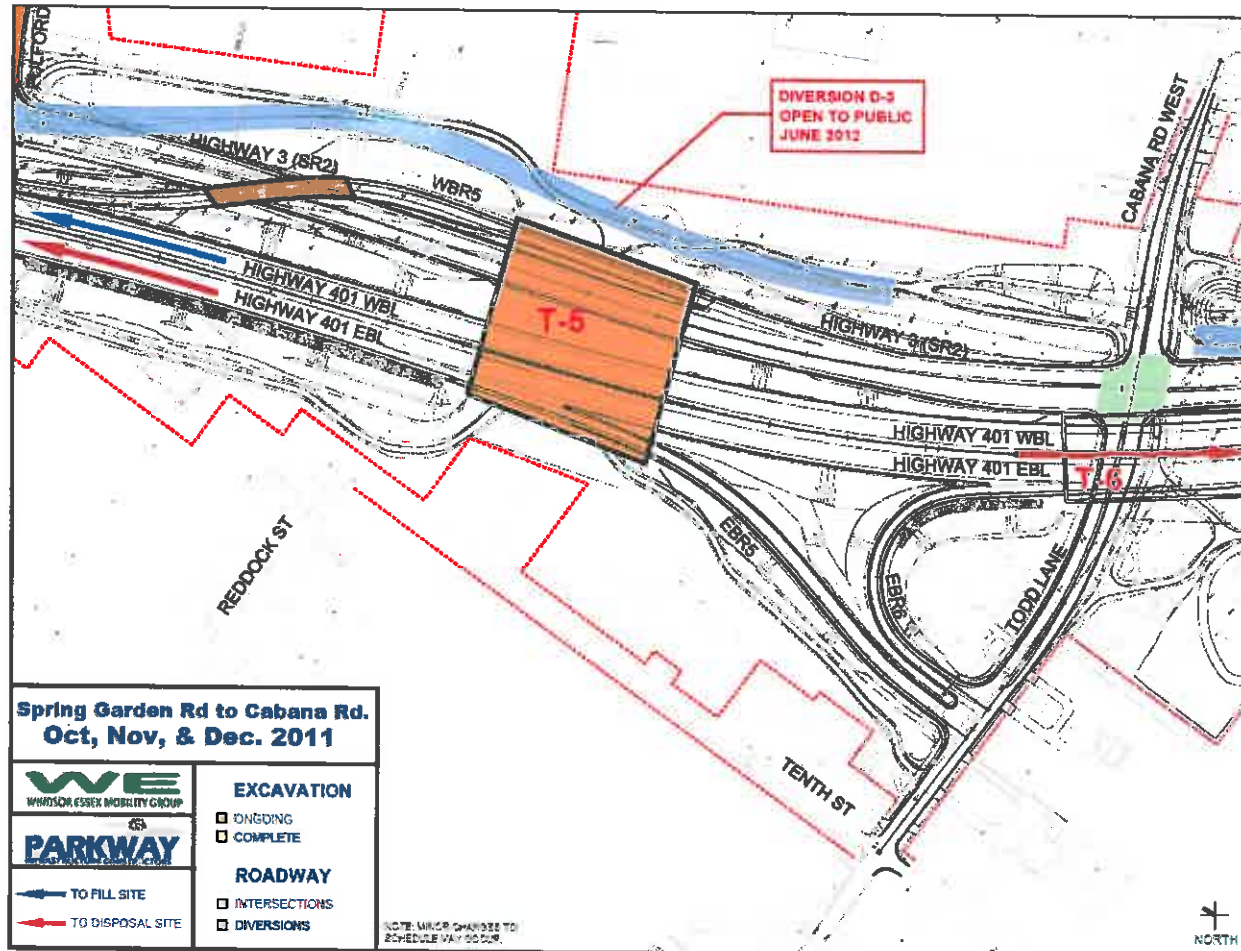
Specifics of Construction Activity IN to Your Neighbourhood



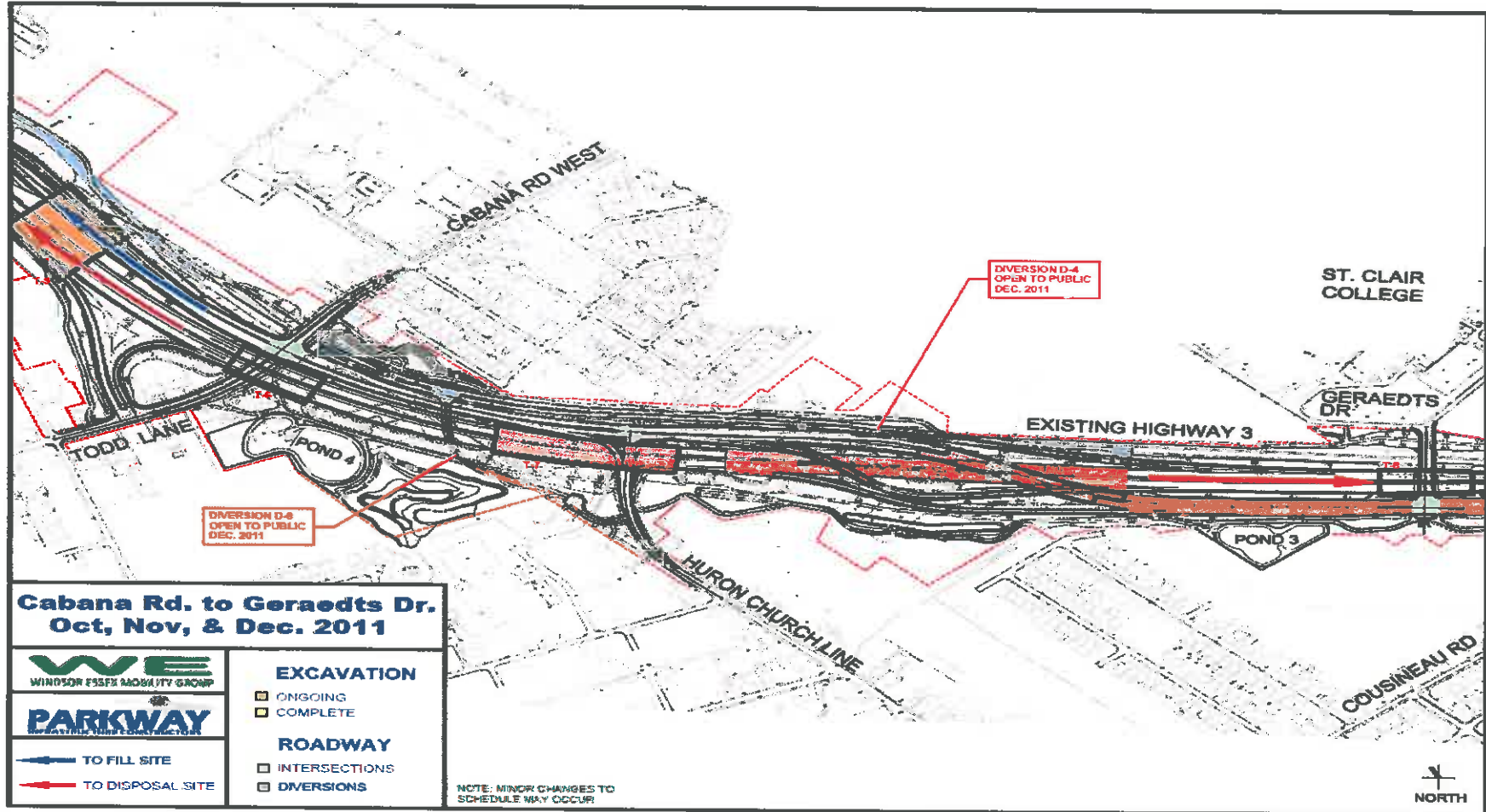
Specifics of Construction Activity IN to Your Neighbourhood



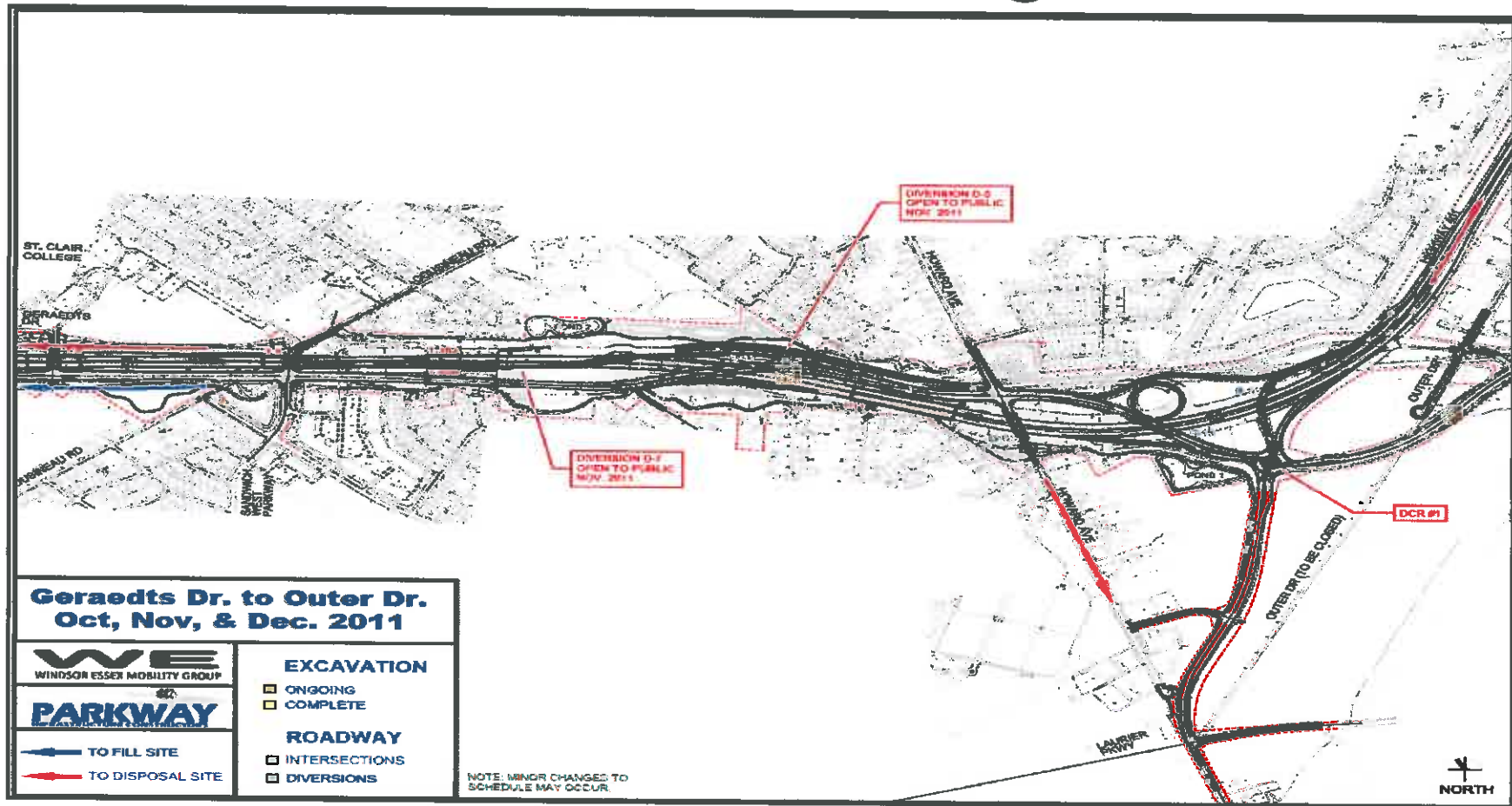
Specifics of Construction Activity IN to Your Neighbourhood



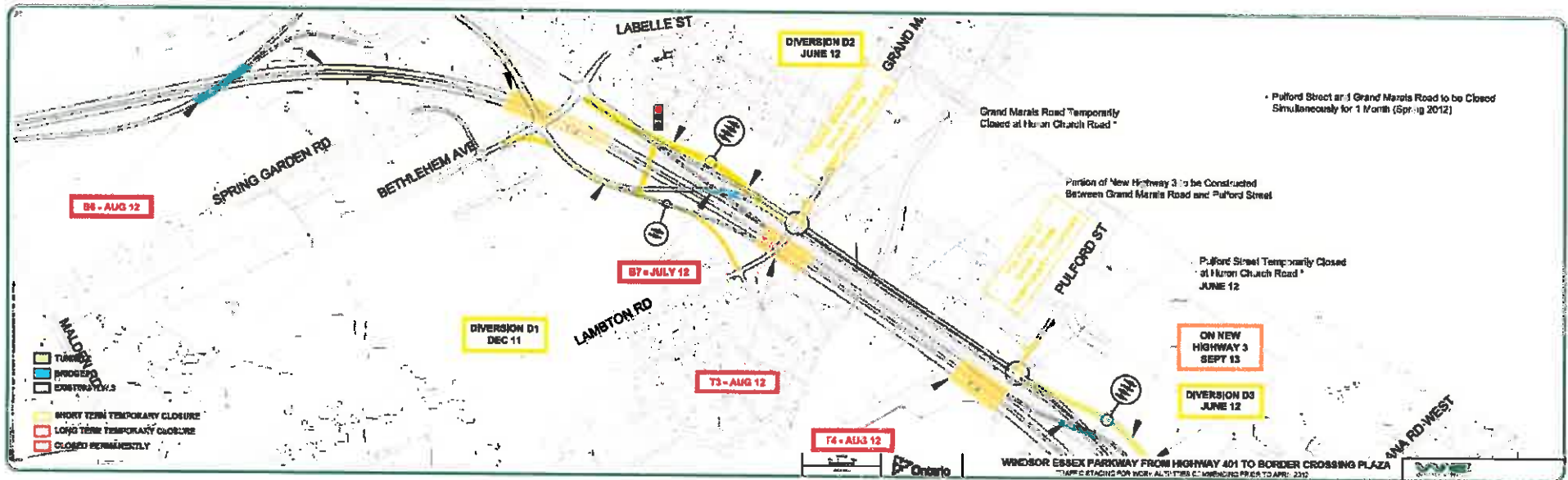
Specifics of Construction Activity EAST of Your Neighbourhood



Specifics of Construction Activity Further EAST of Your Neighbourhood

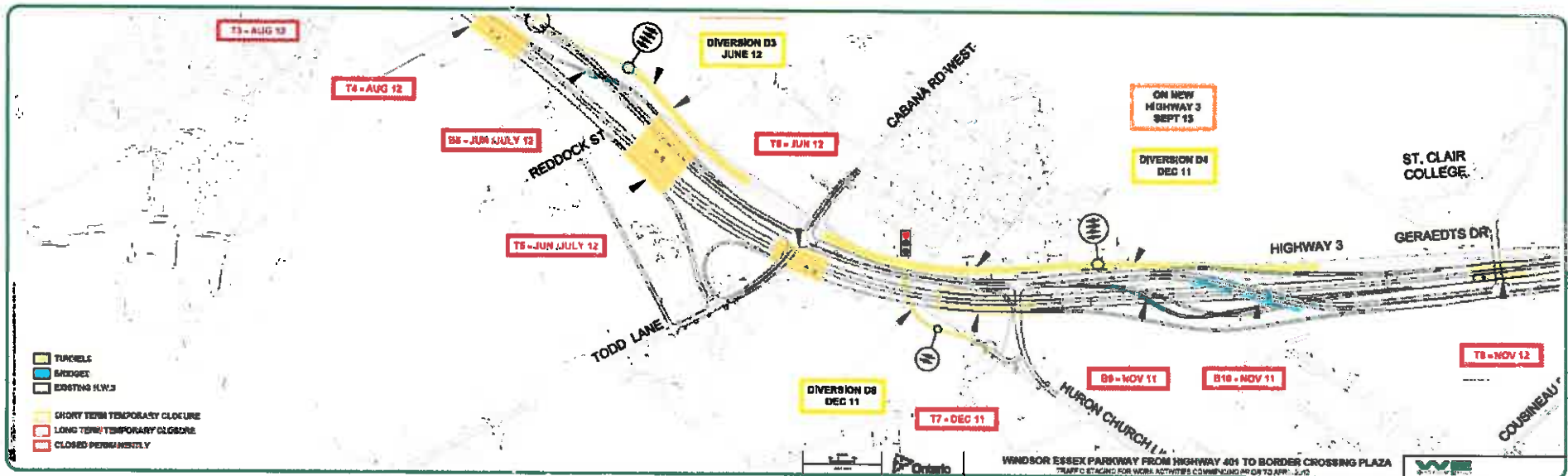


DIVERSIONS IN YOUR NEIGHBOURHOOD

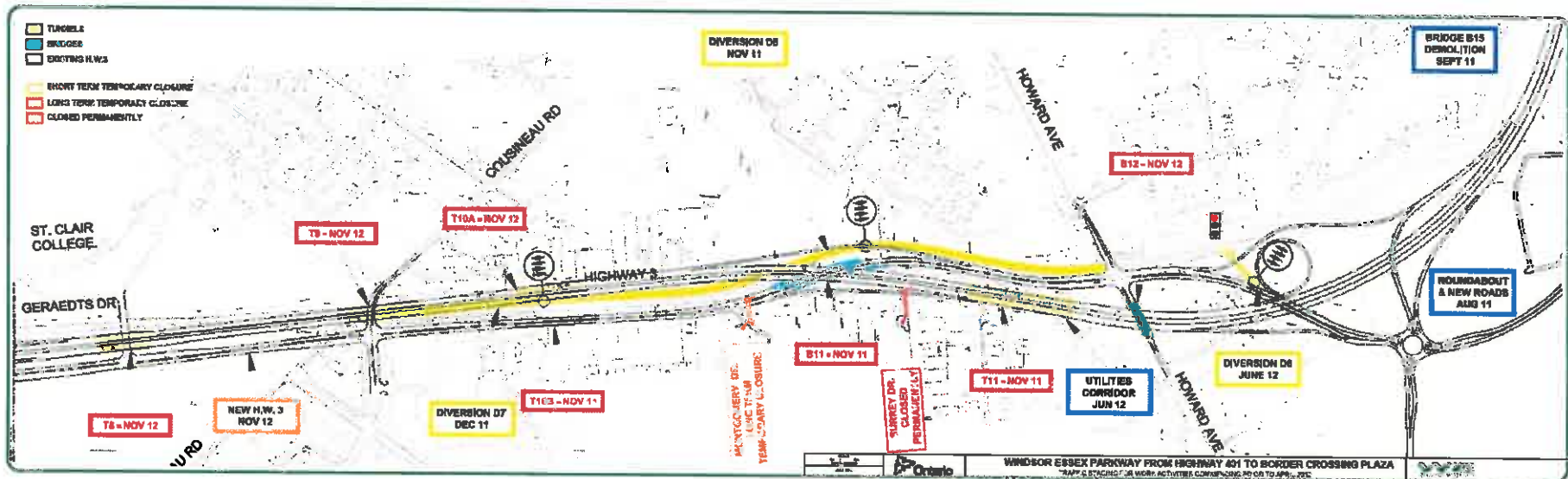


DIVERSIONS

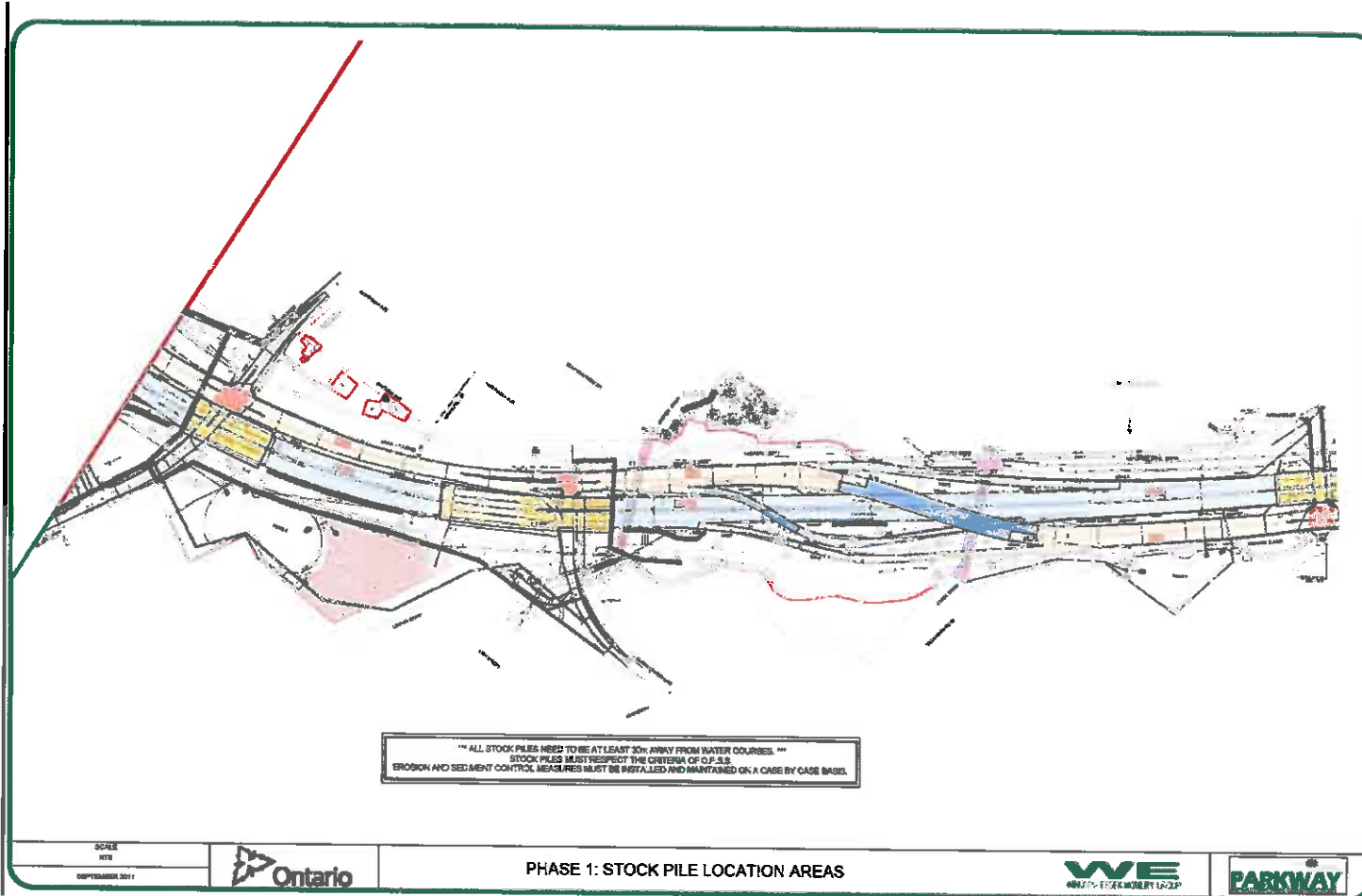
EAST OF YOUR NEIGHBOURHOOD



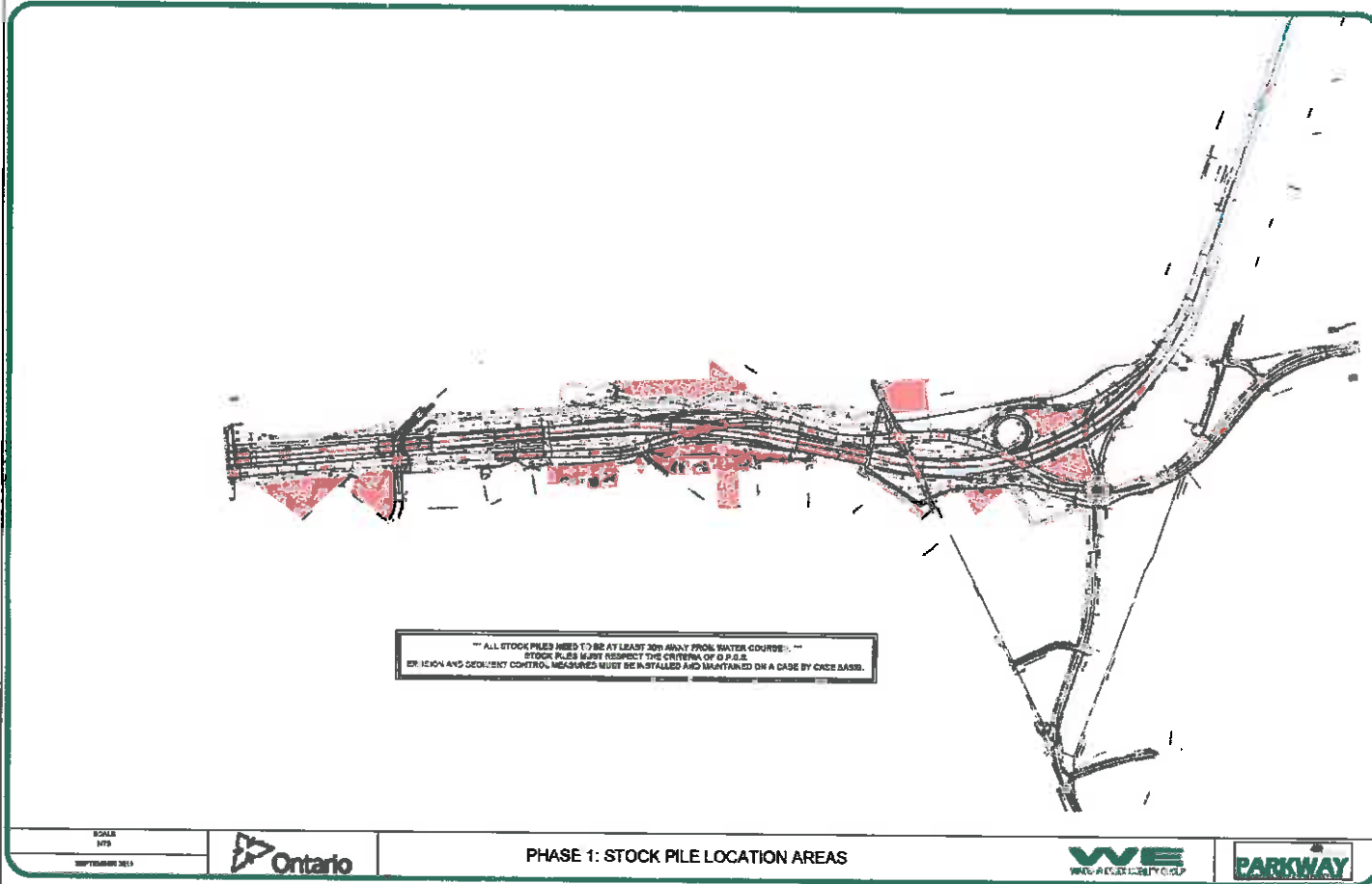
DIVERSIONS EAST OF YOUR NEIGHBOURHOOD



THE WINDSOR-ESSEX **Parkway**



THE WINDSOR-ESSEX Parkway



SCALE
1/8" = 1'-0"
SEPTEMBER 2011



PHASE 1: STOCK PILE LOCATION AREAS





PILE DRIVING

We will show a very short video of pile driving to provide an example of what you can expect from this form of construction.

North Talbot Road Bridge will be the first area to experience pile driving.

We will highlight that area again and remind you of the detours to use while the bridge is under construction.

ROUND TABLE DISCUSSIONS

Let's divide into groups so that the construction managers can sit with you using larger plans to provide an opportunity for detailed, neighbourhood discussions.



COMPLAINTS MANAGEMENT

In the package being given to each of you this evening, we have contact information on the complaints management protocol.

Please tell us what is going wrong so that we can be aware. We can only fix problems that we know about.

We will use this information moving forward to prepare a “Good Neighbour Policy”.



EVALUATION

We have included evaluation forms in your package of information.

Could you please complete them so that we know if this format for providing information works for you.

We propose to have more meetings of this type but only if they prove meaningful.



THANK-YOU

On behalf of the Parkway Project, we sincerely appreciate your time this evening, as well as your patience during this construction process.

We welcome any further comments/questions or additional feedback you may have.
